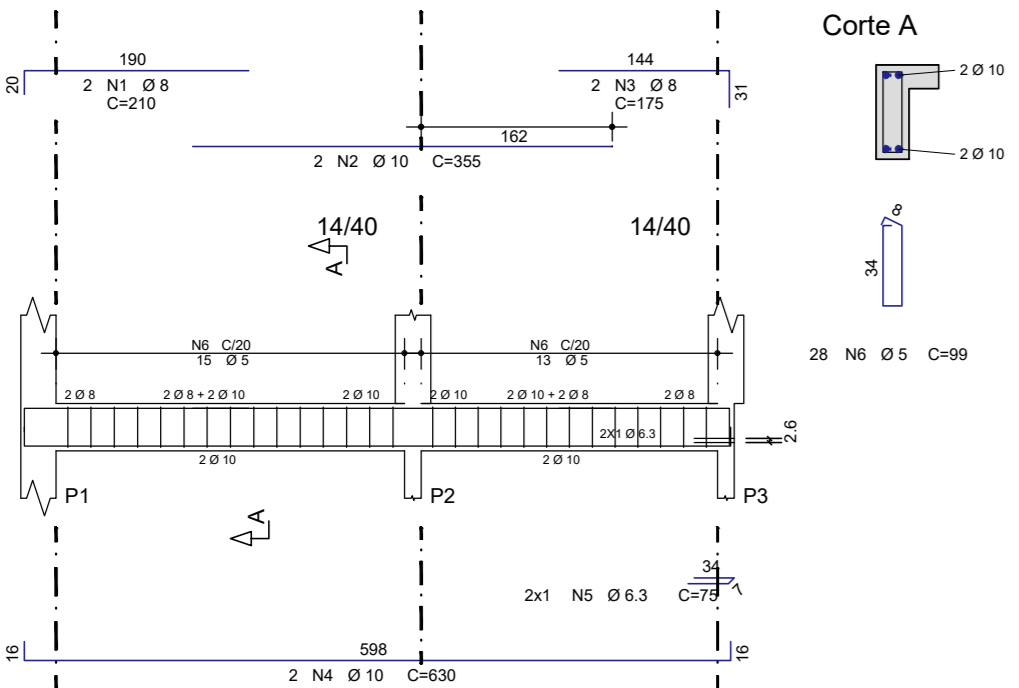
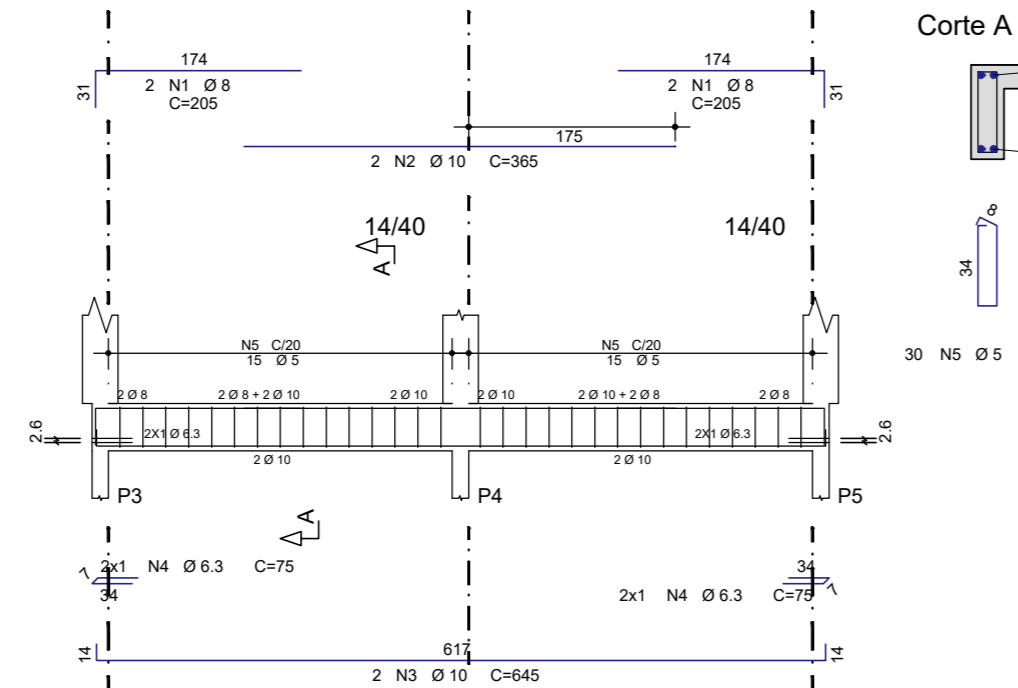


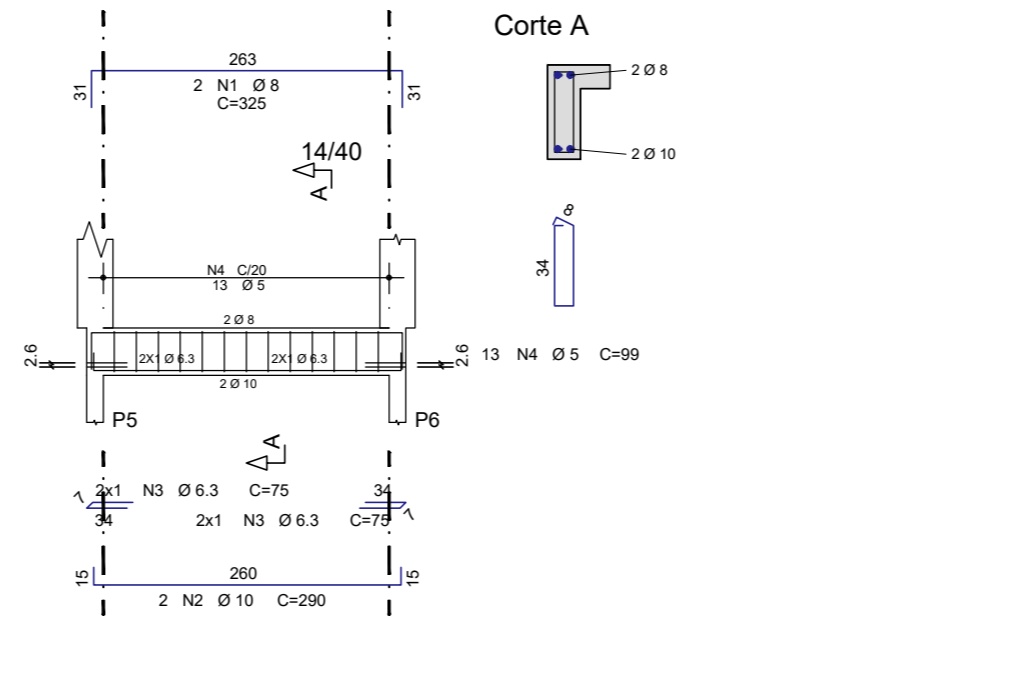
V201



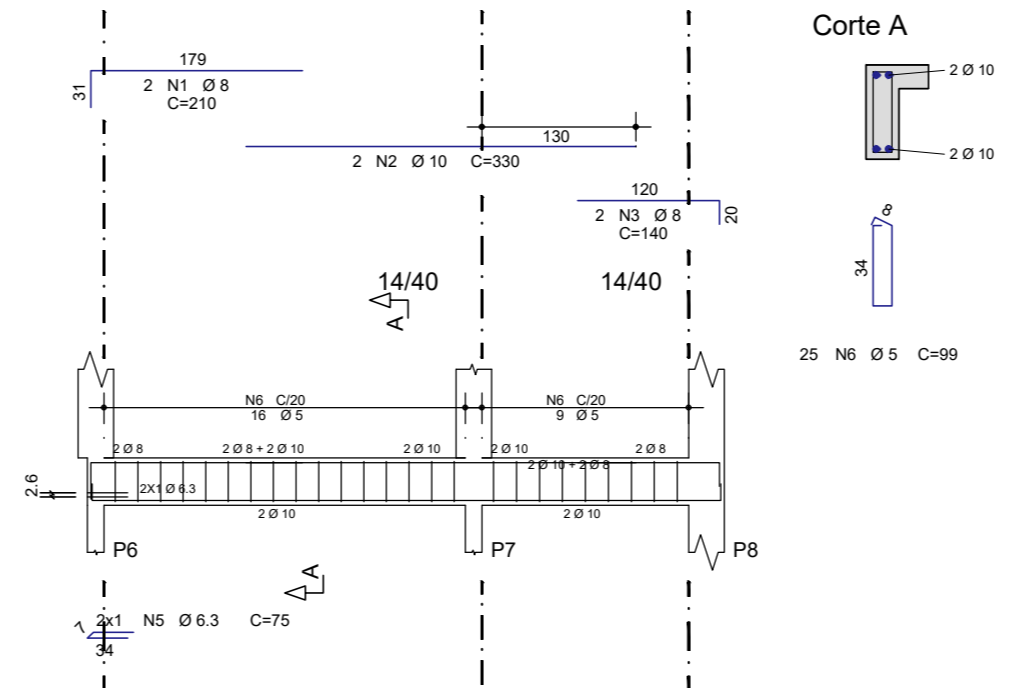
V202



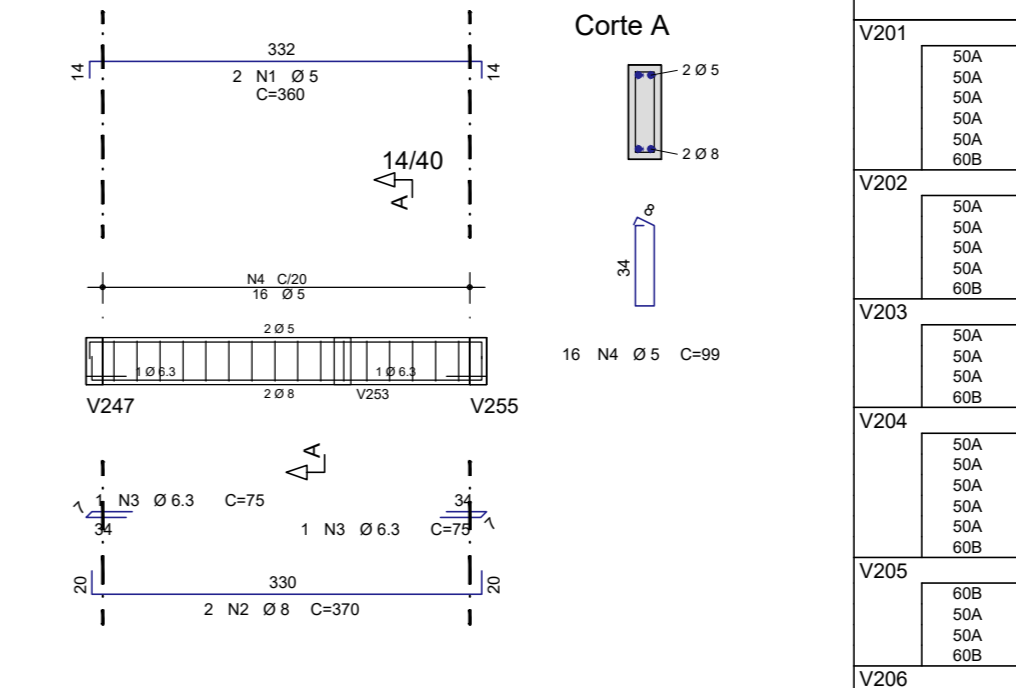
V203



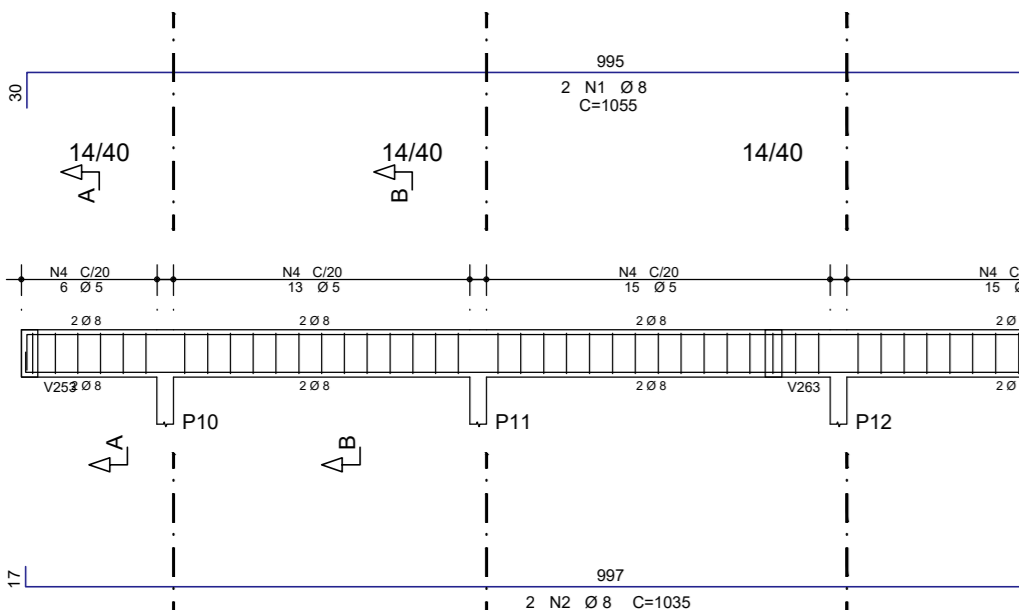
V204



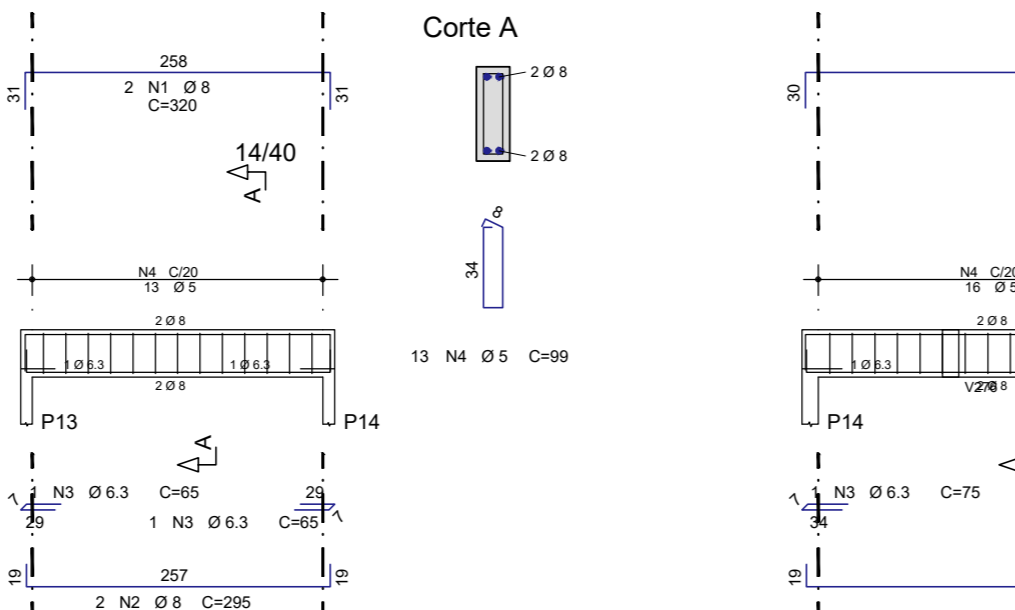
V205



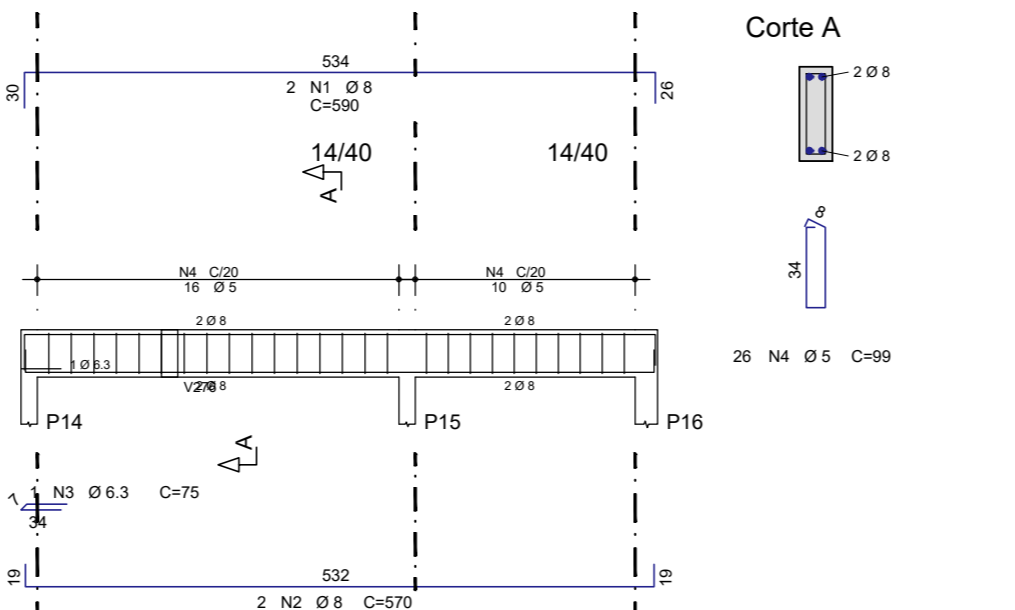
V206



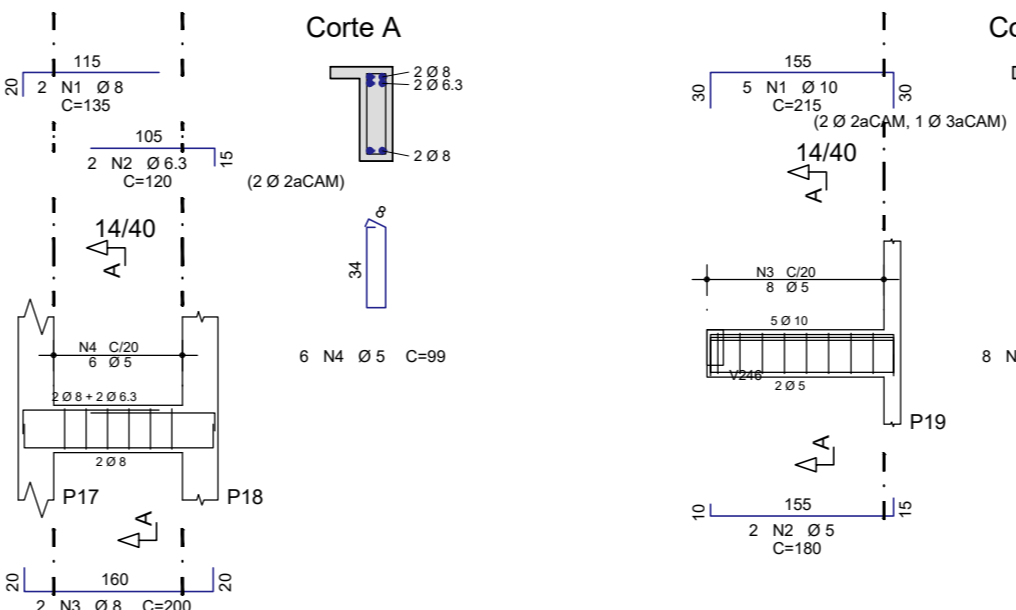
V207



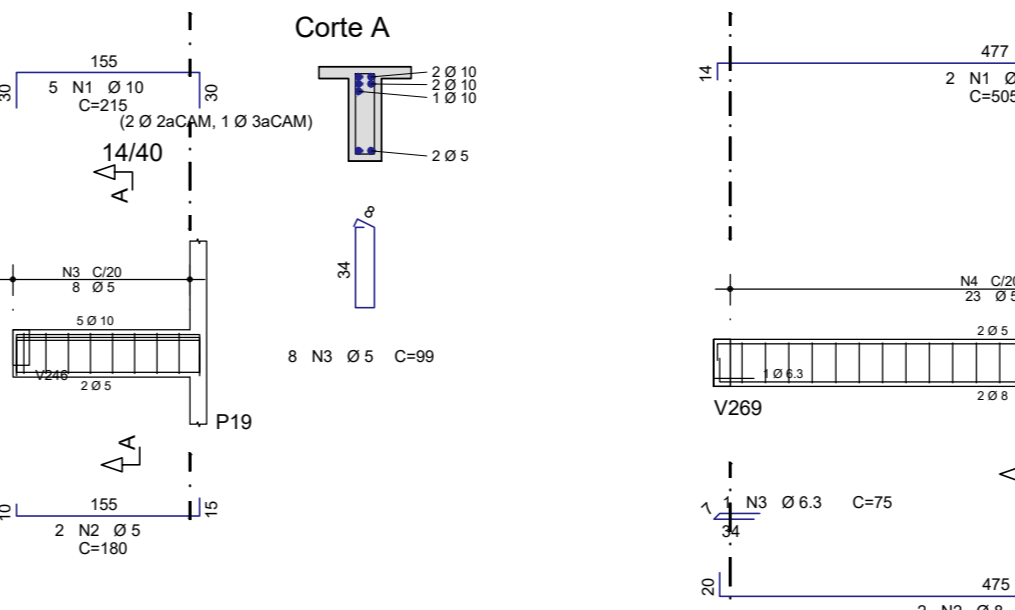
V208



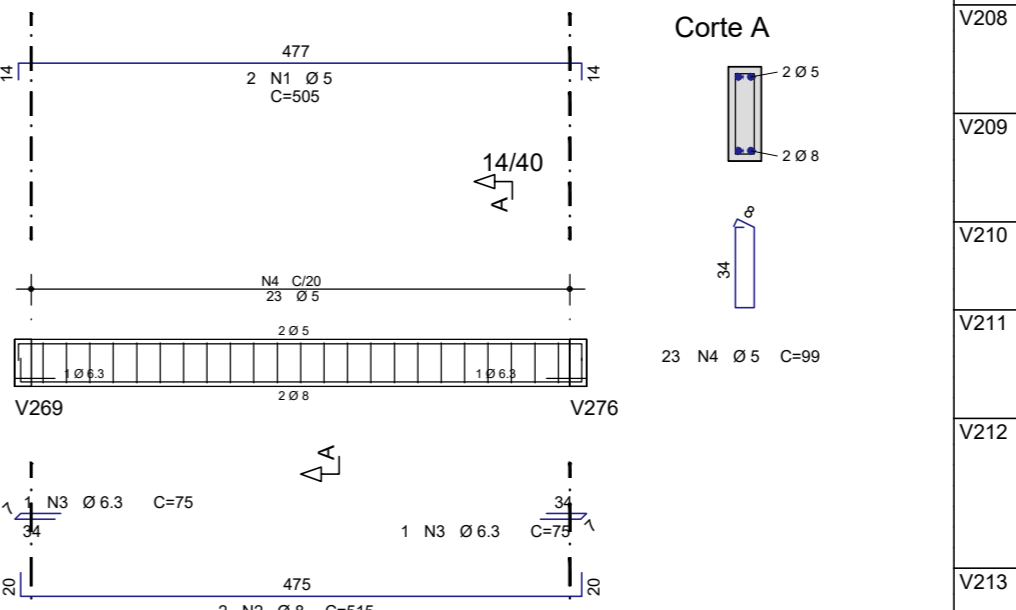
V209



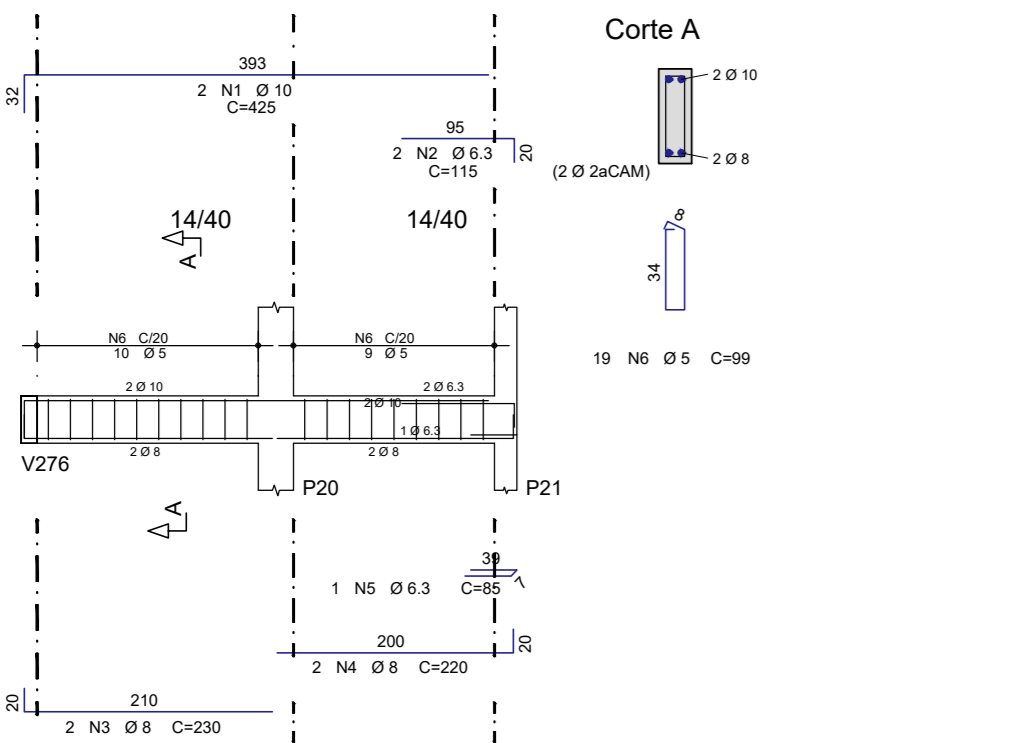
V210



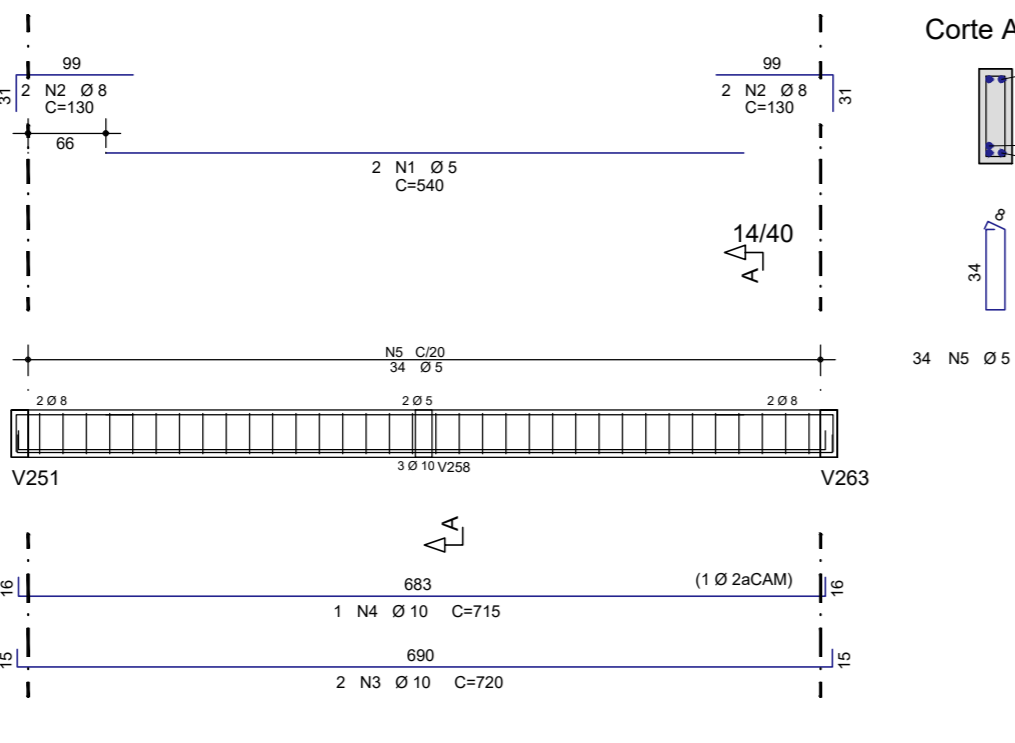
V211



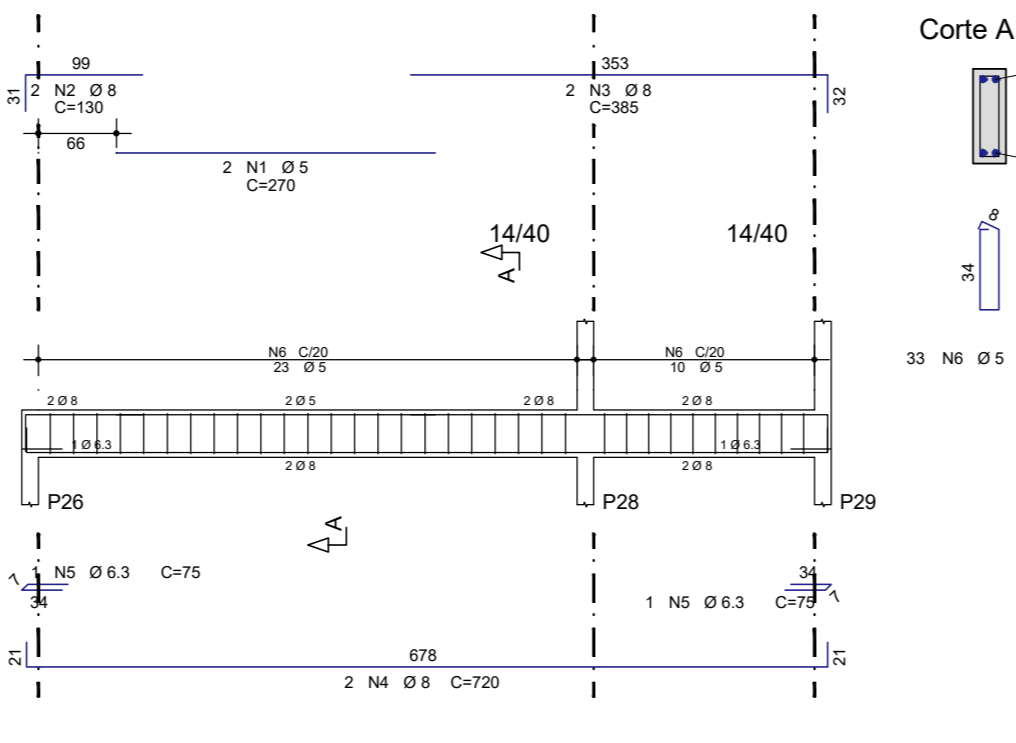
V212



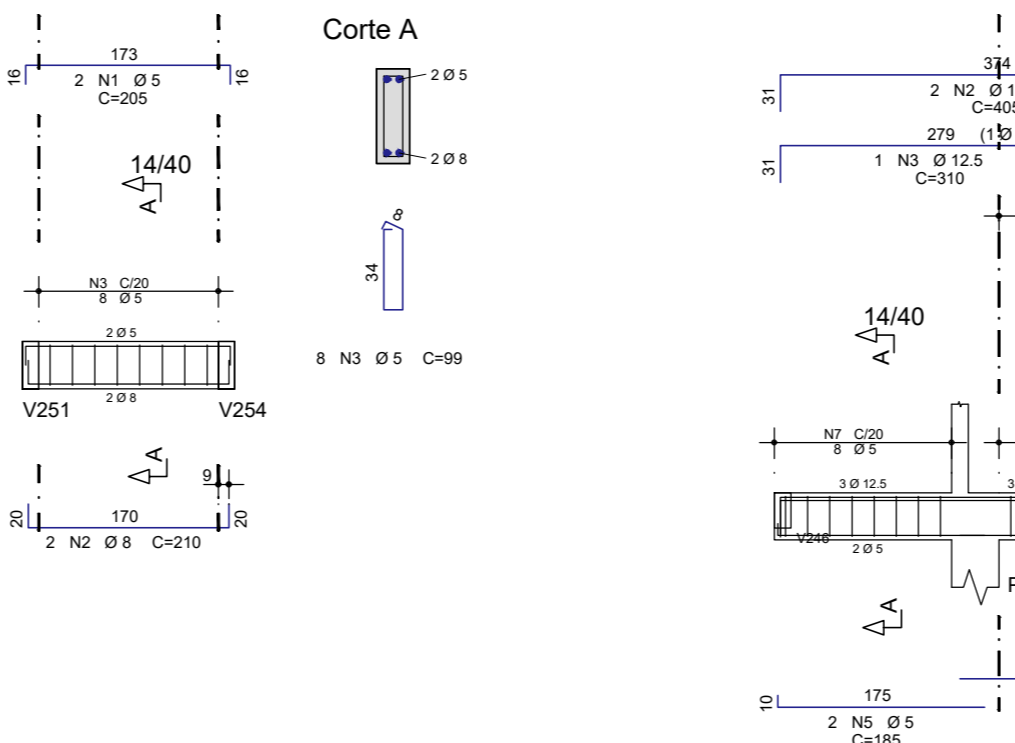
V213



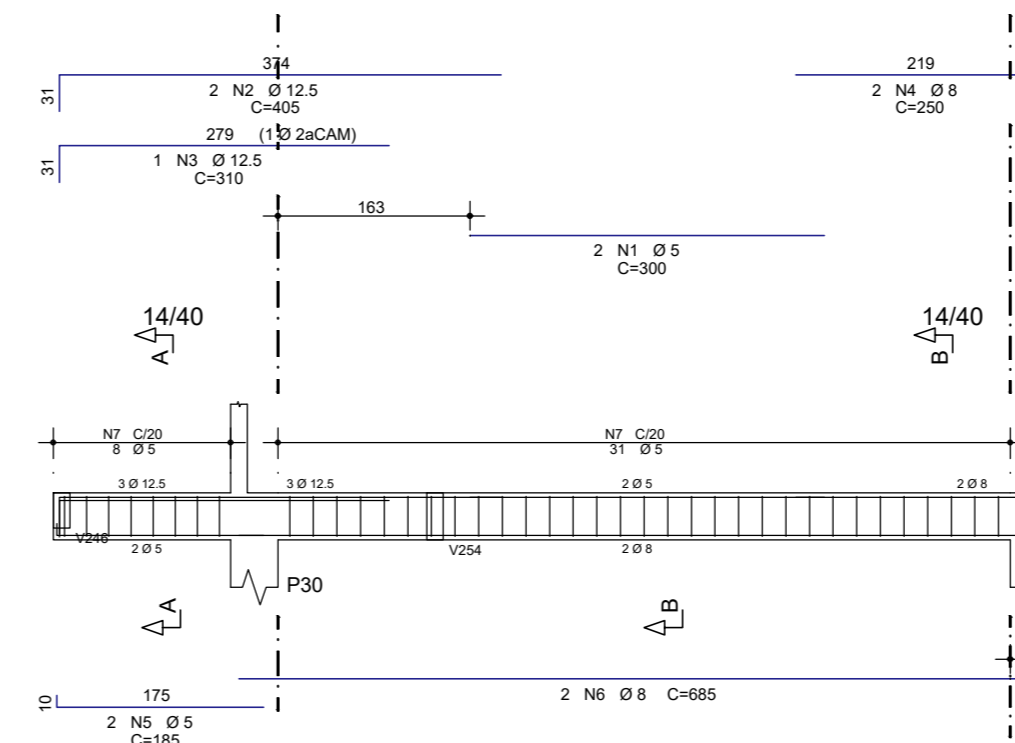
V214



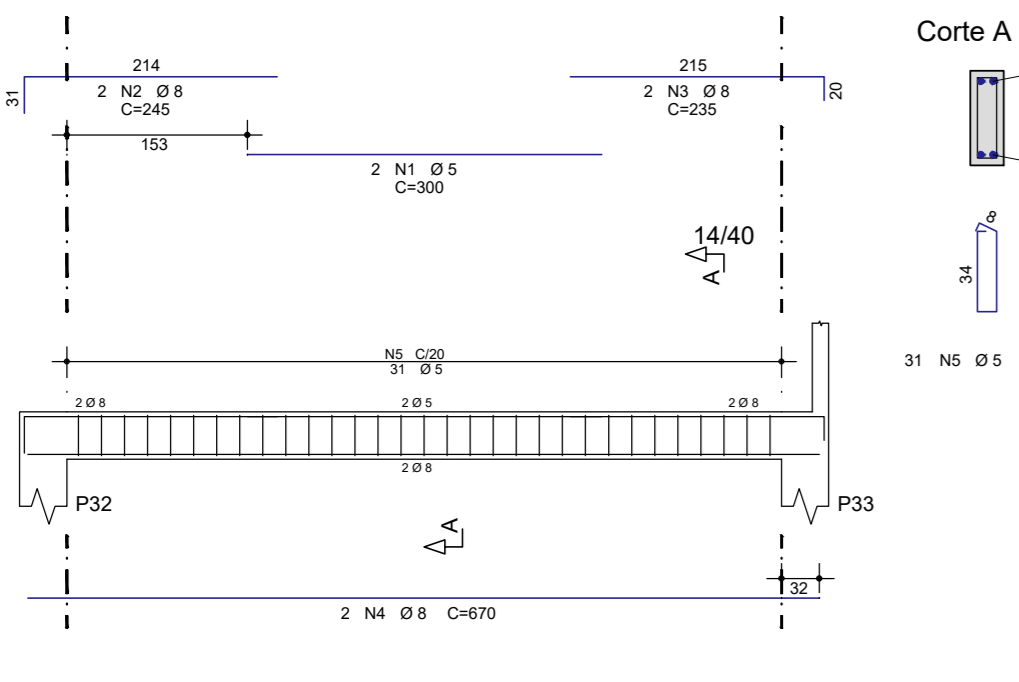
V215



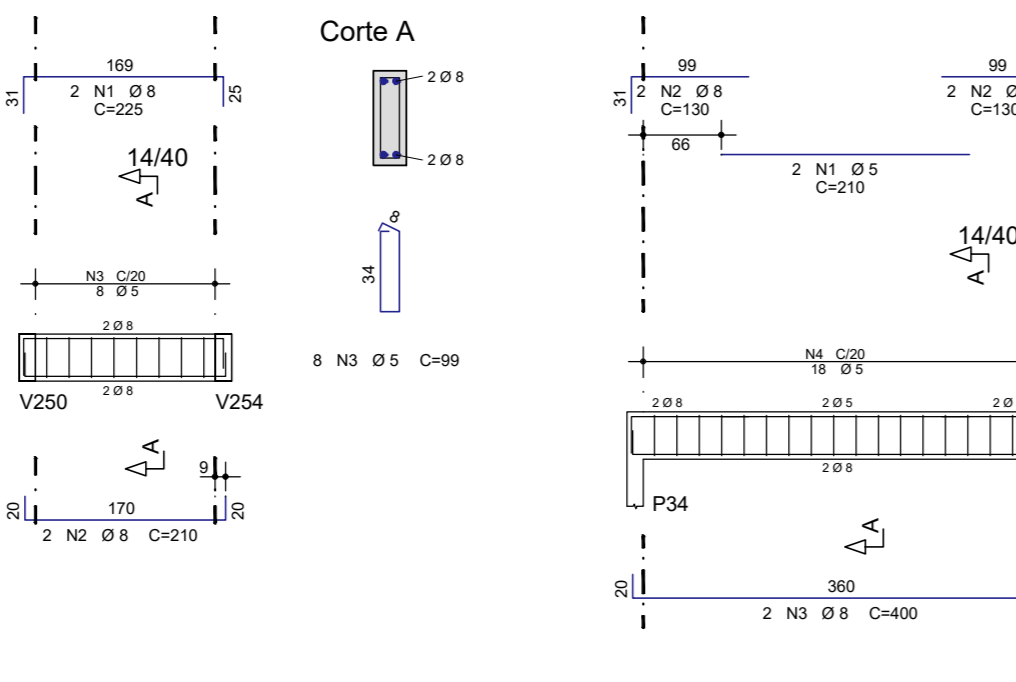
V216



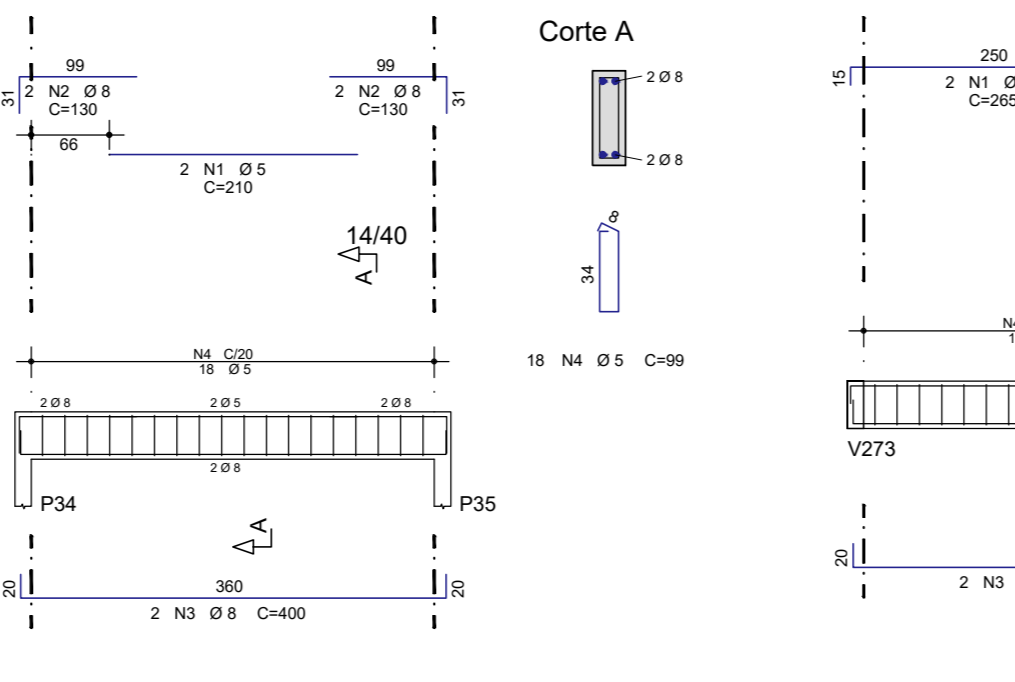
V217



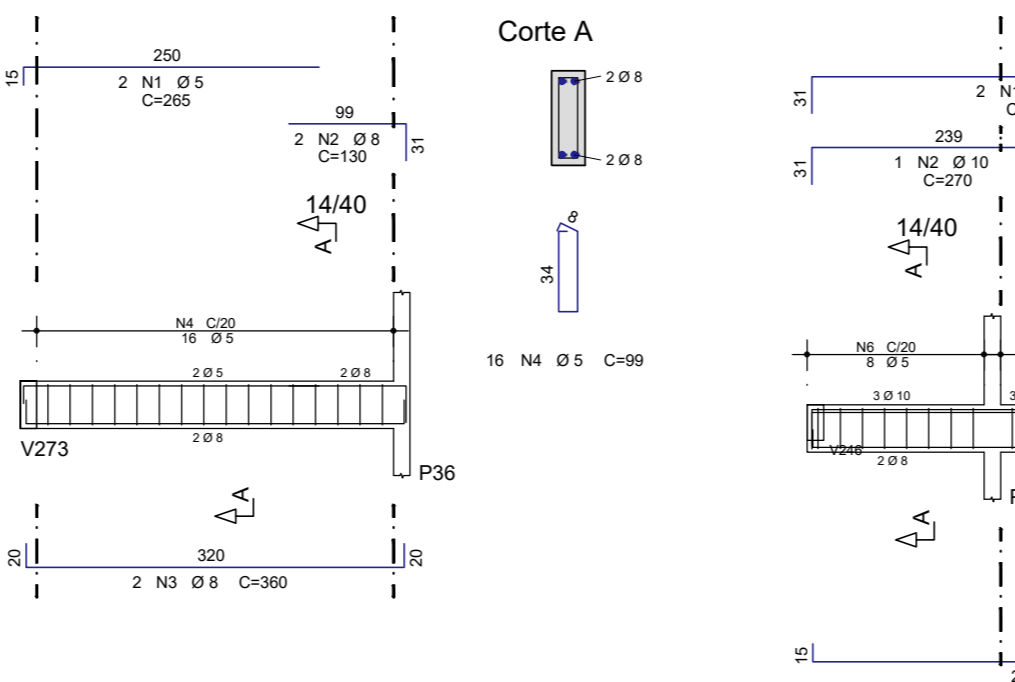
V218



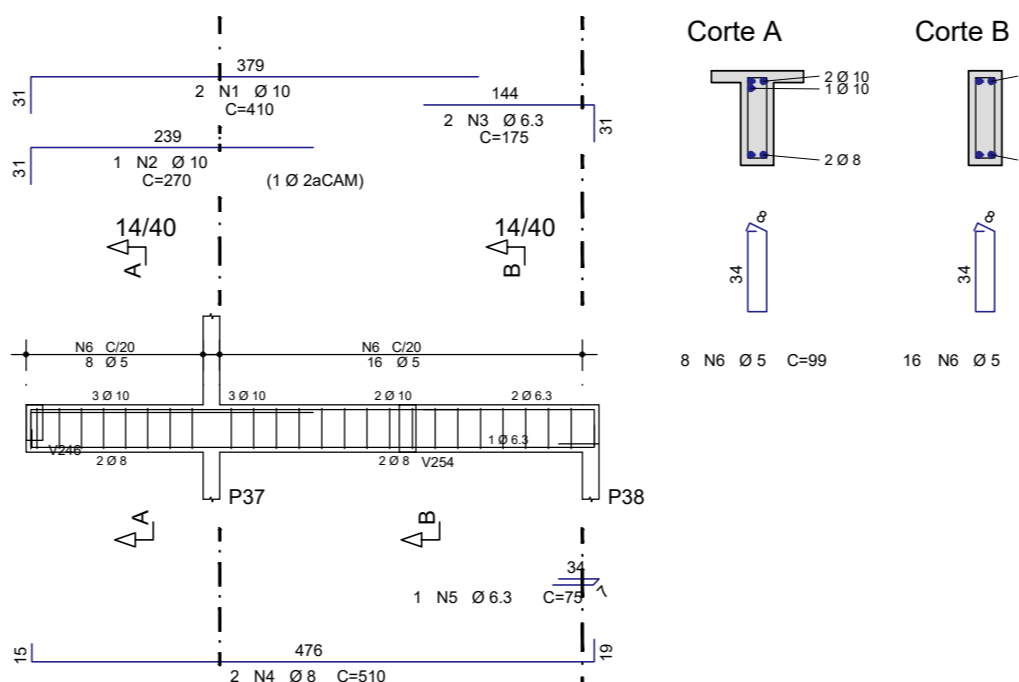
V219



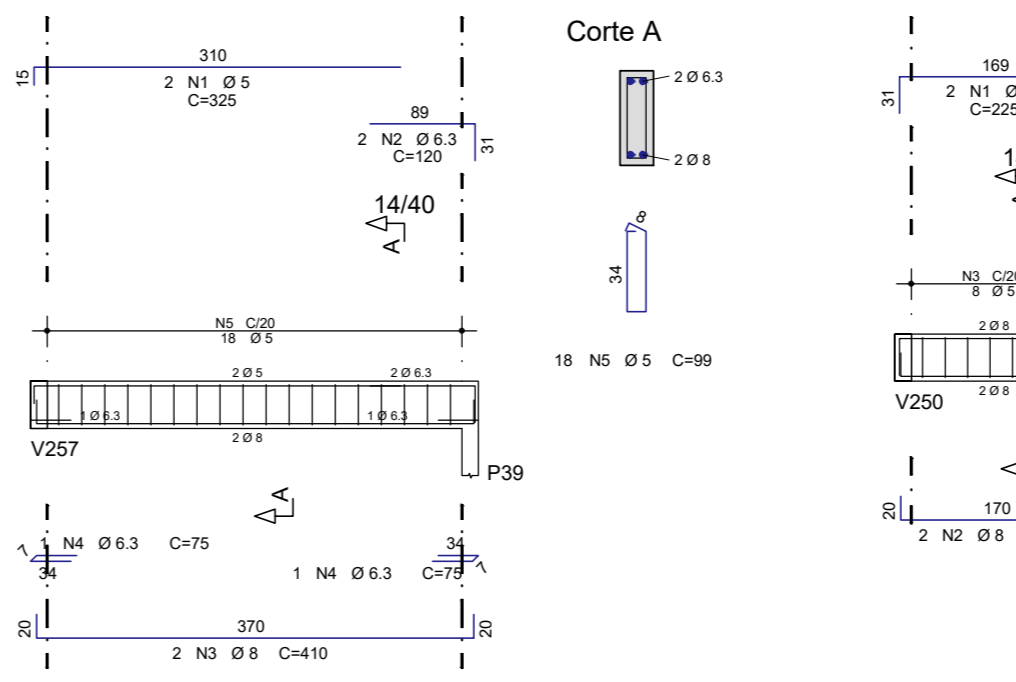
V220



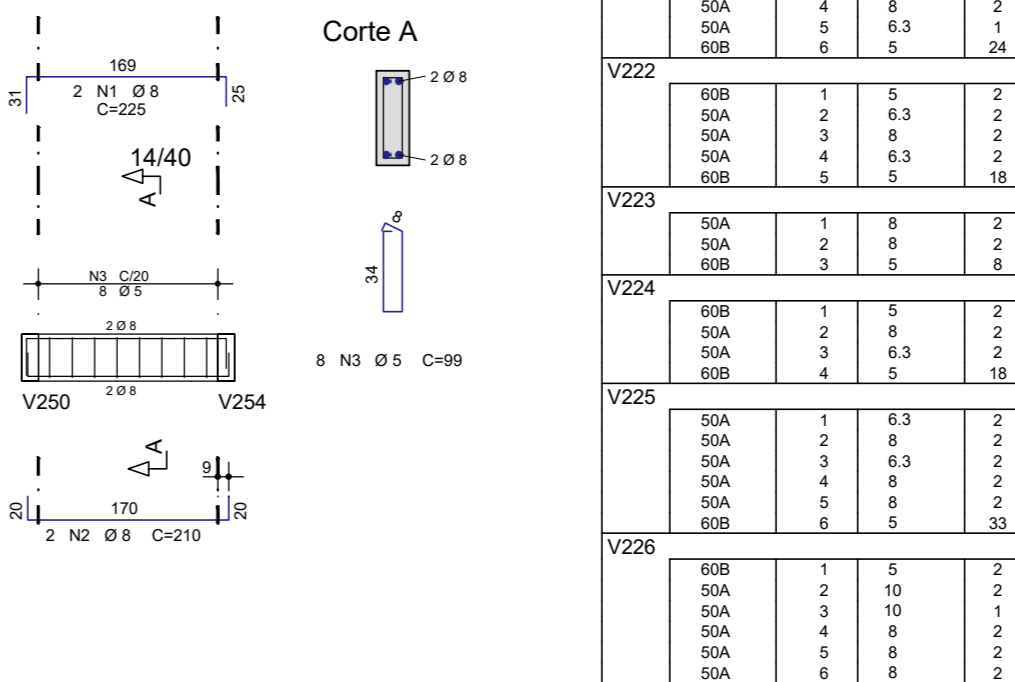
V221



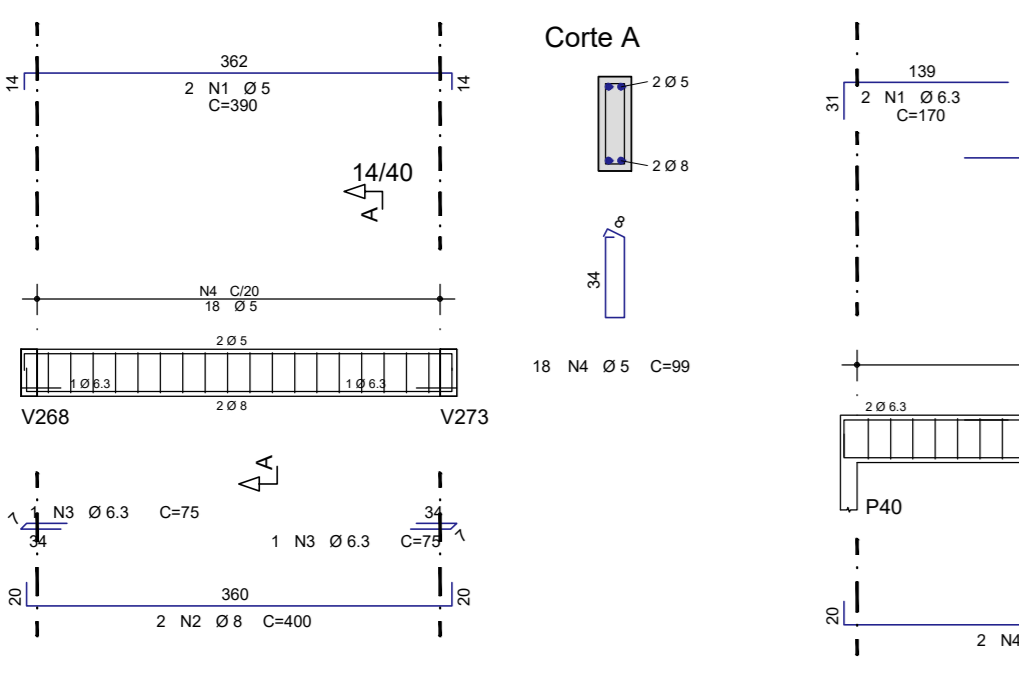
V222



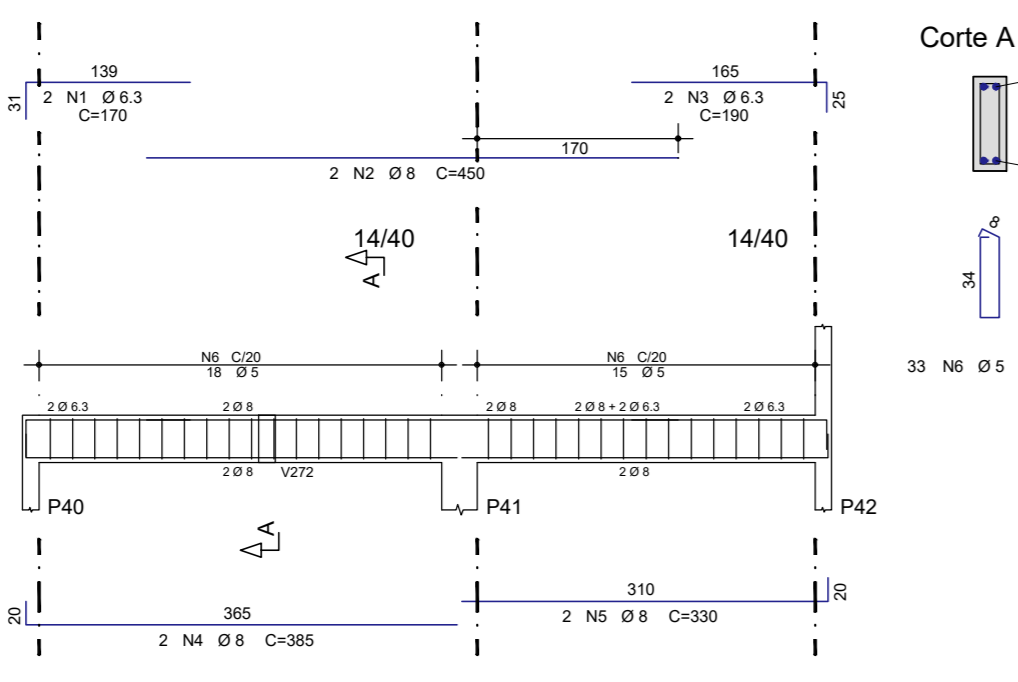
V223



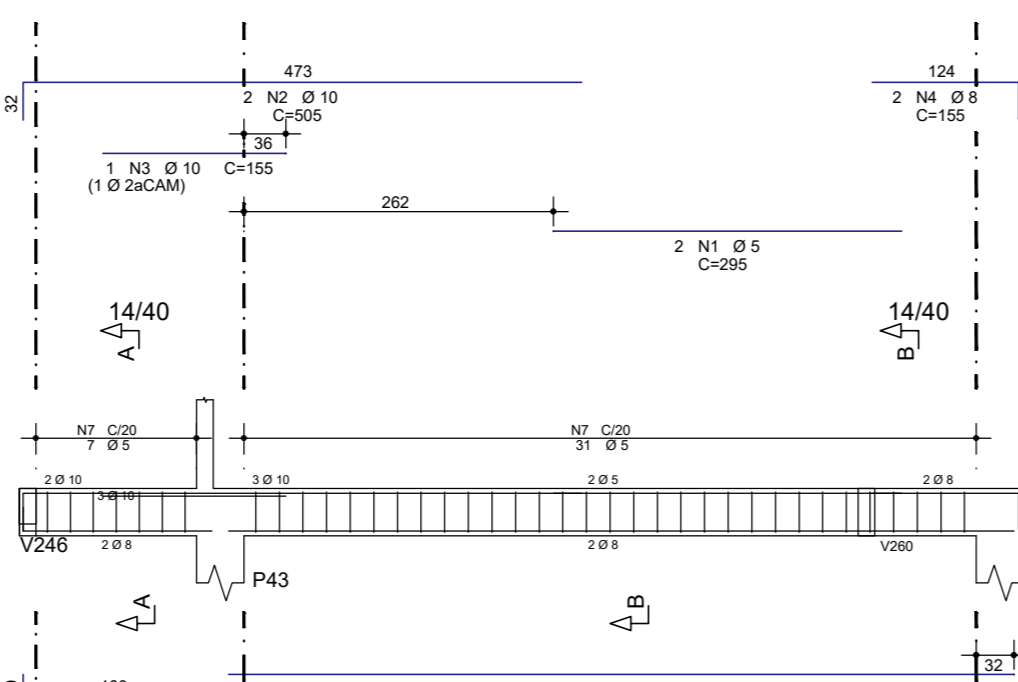
V224



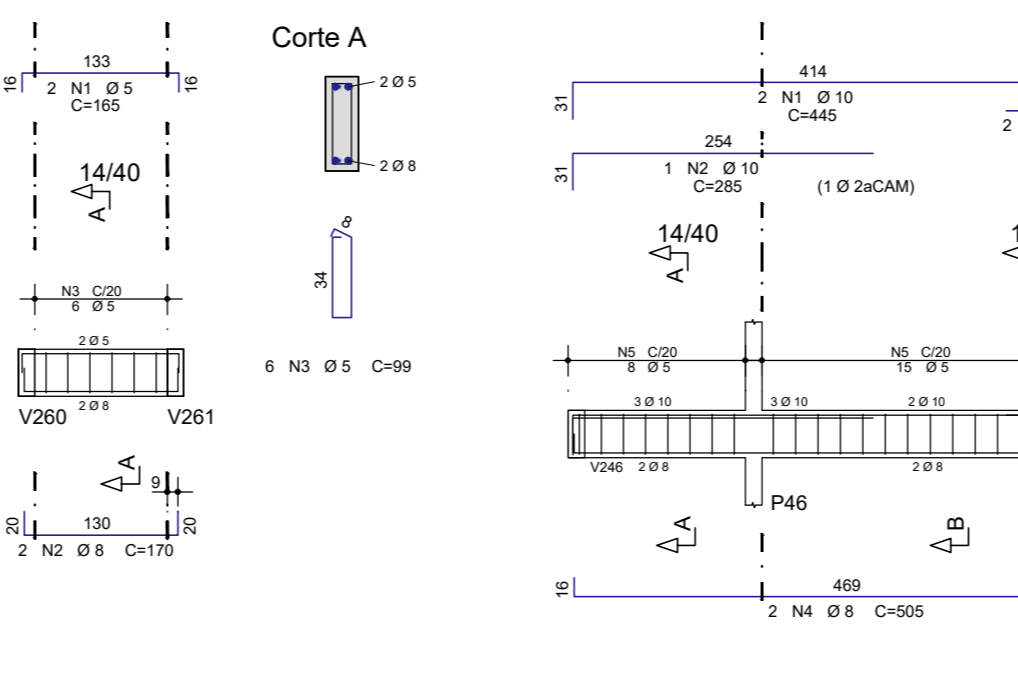
V225



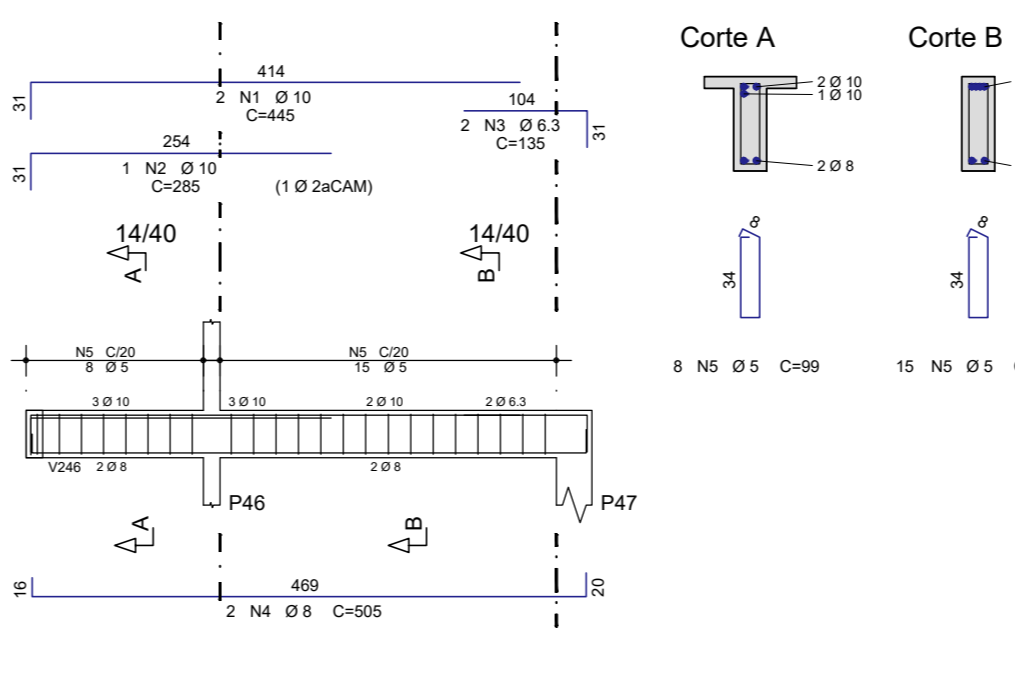
V226



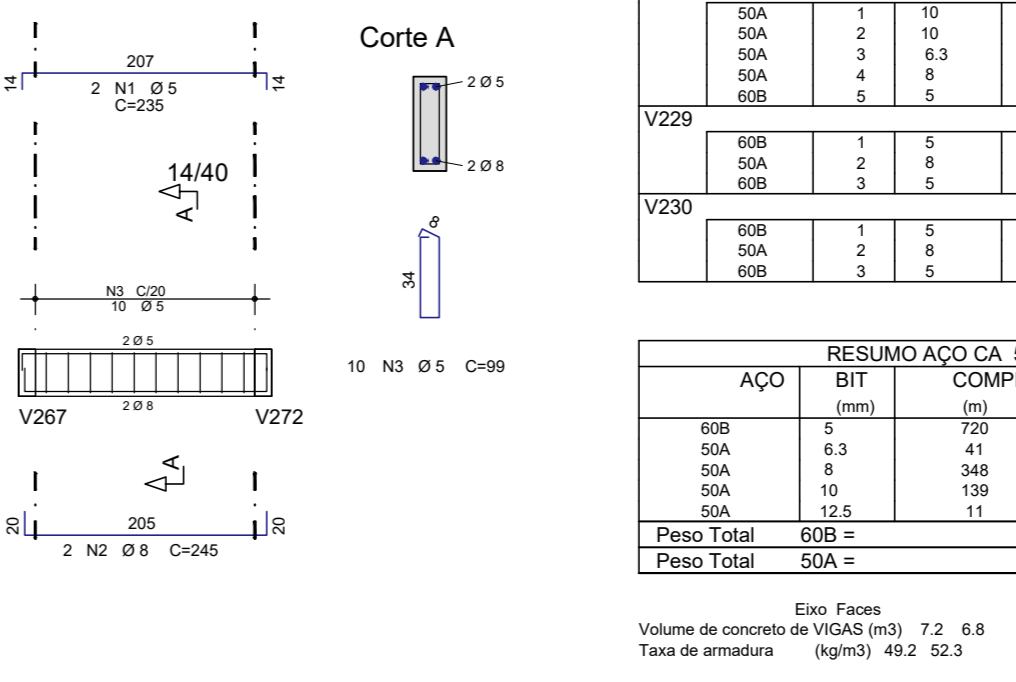
V227



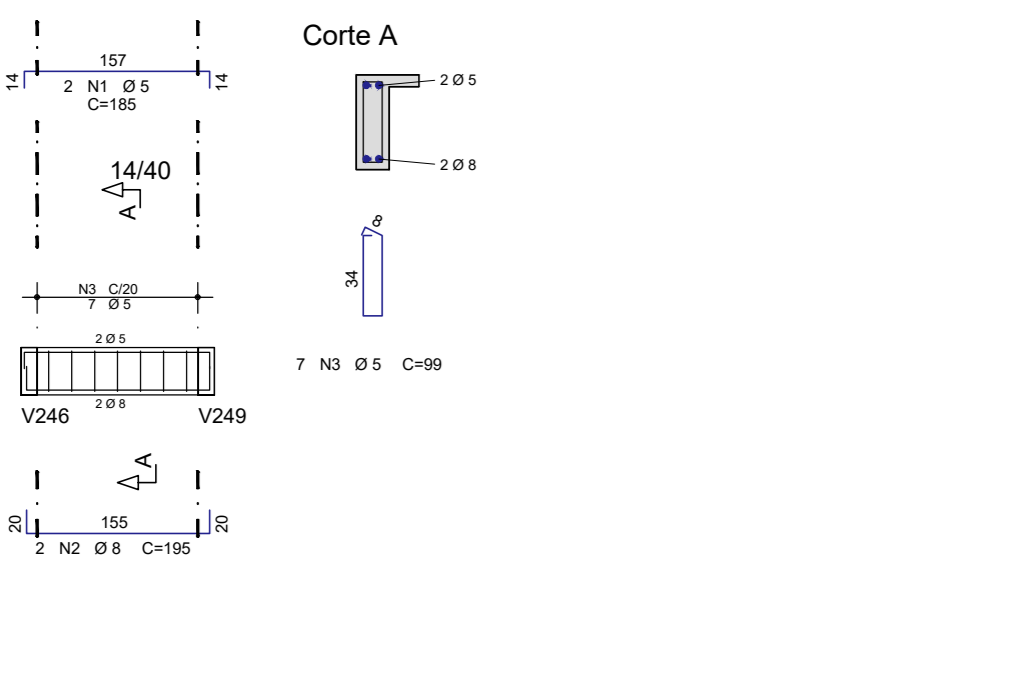
V228



V229



V230

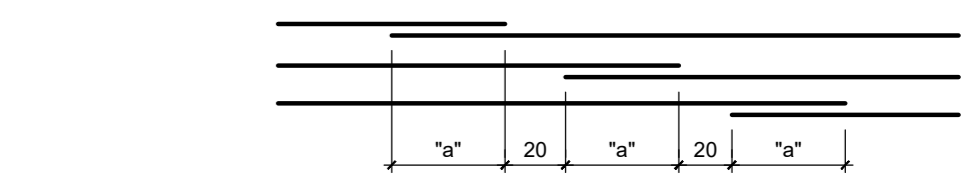


ACO	POS	BIT	QUANT	COMPRIMENTO
mm			mm	
V201	SSA	1	8	210
	SSA	2	10	710
	SSA	3	8	170
	SSA	4	10	620
	SSA	5	5	75
	SSA	6	5	190
	SSA	7	5	2770
V202	SSA	1	8	200
	SSA	2	10	820
	SSA	3	10	1200
	SSA	4	10	300
	SSA	5	5	250
V203	SSA	1	8	300
	SSA	2	10	640
	SSA	3	10	900
	SSA	4	10	300
	SSA	5	5	100
V204	SSA	1	8	210
	SSA	2	10	820
	SSA	3	10	1100
	SSA	4	10	280
	SSA	5	5	150
	SSA	6	5	2050
V205	SSA	1	5	300
	SSA	2	8	720
	SSA	3	8	160
	SSA	4	5	75
V206	SSA	1	8	1000
	SSA	2	8	2100
	SSA	3	8	1050
	SSA	4	5	450
V207	SSA	2	8	300
	SSA	3	8	640
	SSA	4	5	100
	SSA	5	5	1200
V208	SSA	1	8	200
	SSA	2	10	1100
	SSA	3	10	1100
	SSA	4	10	300
V209	SSA	1	8	130
	SSA	2	10	270
	SSA	3	10	400
	SSA	4	5	390
V210	SSA	1	10	210
	SSA	2	10	360
	SSA	3	5	750
V211	SSA	1	5	250
	SSA	2	8	1000
	SSA	3	8	100
	SSA	4	5	2070
V212	SSA	1	10	420
	SSA	2	10	230
	SSA	3	10	440
	SSA	4	8	80
	SSA	5	5	180
V213	SSA	2	8	130
	SSA	3	8	100
	SSA	4	10	710
	SSA	5	5	3000
V214	SSA	1	5	270
	SSA	2	8	290
	SSA	3	8	770
	SSA	4	5	160
V215	SSA	1	5	200
	SSA	2	8	420
	SSA	3	5	750
V216	SSA	1	5	300
	SSA	2	12,5	810
	SSA	3	12,5	310
	SSA	4	8	200
	SSA	5	5	160
	SSA	6	5	1100
V217	SSA	1	8	300
	SSA	2	8	600
	SSA	3	8	240
	SSA	4	8	1400
	SSA	5	5	300
V218	SSA	1	10	420
	SSA	2	8	210
	SSA	3	8	420
V219	SSA	1	5	210
	SSA	2	8	420
	SSA	3	8	800
	SSA	4	5	1750
V220	SSA	2	8	130
	SSA	3	8	710
	SSA	4	5	10
V221	SSA	1	10	2
	SSA	2	10	270
	SSA	3	8	170
	SSA	4	8	100
	SSA	5	5	270
V222	SSA	1	5	320
	SSA	2	8	600
	SSA	3	8	410
	SSA	4	8	75
	SSA	5	5	1750
V223	SSA	1	8	200
	SSA	2	8	420
	SSA	3	5	75
V224	SSA	1	5	300
	SSA	2	8	400
	SSA	3	8	800
	SSA	4	5	1750
V225	SSA	1	5	2
	SSA	2	8	170
	SSA	3	8	340
	SSA	4	8	400
	SSA	5	5	300
V226	SSA	1	5	200
	SSA	2	10	590
	SSA	3	10	100
	SSA	4	8	150
	SSA	5	8	100
	SSA	6	8	100
	SSA	7	5	600
	SSA	8	5	1300
	SSA	9	5	3000
V227	SSA	1	5	2
	SSA	2	8	160
	SSA	3	8	340
	SSA	4	8	200
V228	SSA	1	10	2
	SSA	2	10	270
	SSA	3	8	170
	SSA	4	8	100
	SSA	5	5	270
V229	SSA	1	5	2
	SSA	2	8	230
	SSA	3	5	390
V230	SSA	2	5	2
	SSA	3	5	160
	SSA	4	5	350

ACO	BIT	COMPR	PESO
mm		mm	kg
SSA	6	100	11
SSA	8	10	10
SSA	10	10	10
SSA	12,5	11	11
Peso Total	SSA		111 kg
Peso Total	SSA		244 kg

Volume de concreto de V204 (m³): 7,2 - 8,8
Tubo de armadura (kg/m): 40,2 - 50,3

DETALHE GÊNÉRICO DAS EMENDAS ALTERNADAS



(USADA PARA BARRAS CORRIAS COM EMENDAS NÃO INDICADAS)

CLASSE DE CONCRETO C-50 OU MENOR					
Ø	5,0	6,3	8,0	10,0	12,5
L(cm)	30	35	45	60	75

RAIO DE CURVATURA DAS BARRAS



(USADA PARA BARRAS COM RAIOS NÃO INDICADOS)

CLASSE DE CONCRETO C-50 OU MENOR					
Ø	8	10	12,5	16,0	20,0
R(cm)	7	8	10	12	15

MATERIAIS

CONCRETO		
RESISTÊNCIA A COMPRESSÃO	f _{cd} = 25 MPa	
MÓDULO DE ELASTICIDADE	E _c = 28.000,00 MPa	
RELACÃO ÁGUA / CIMENTO	< 0,60	
SLUMP	-	
ACO		
CATEGORIA	CA - 50 / CA - 60	

NOTAS

- PROJETO ELABORADO DE ACORDO COM A NORMA NBR - 6118:2014
- O CONCRETO DEVE ATENDER AS ESPECIFICAÇÕES DA NBR - 12.655:1996
- A EXECUÇÃO DA ESTRUTURA DEVE OBEDECER AS PRESCRIÇÕES DA NBR - 14.931:2003
- CLASSE DE AGRESSIVIDADE AMBIENTAL: II
- TOLERÂNCIA NA EXECUÇÃO DOS RECORRIMENTOS: 10mm
- AS ARMADURAS DEVERÃO ESTAR LIMPAS E ISENTAS DE QUALQUER SUBSTÂNCIA QUE PREJUDIQUEM SUA ADESIÃO AO CONCRETO, INCLUSIVE ESCAMAS DE OXIDAÇÃO.
- LIMPAR AS FORMAS E VERIFICAR TODAS AS JUNTAS ANTES DO LANÇAMENTO DO CONCRETO.
- EM HIPÓTESE ALGUMA A CONCRETAGEM PODERÁ OCORRER SOBRE PEDRA, PEDACOS DE MADEIRA, SERRAÇÃO OU OUTRO CORPO ESTRANHO À ESTRUTURA.

02	29/01/2018	RAFAEL L. DA LUZ	REVISÃO GERAL - DETALHAMENTO
01	06/12/2017	RAFAEL L. DA LUZ	REVISÃO - PVTO INFERIOR
00	13/11/2017	RAFAEL L. DA LUZ	EMIÇÃO INICIAL
REV	DATA	AUTOR	ASSUNTO